



SPARE PARTS EXPLODED VIEW
GAS WALL BOILERS

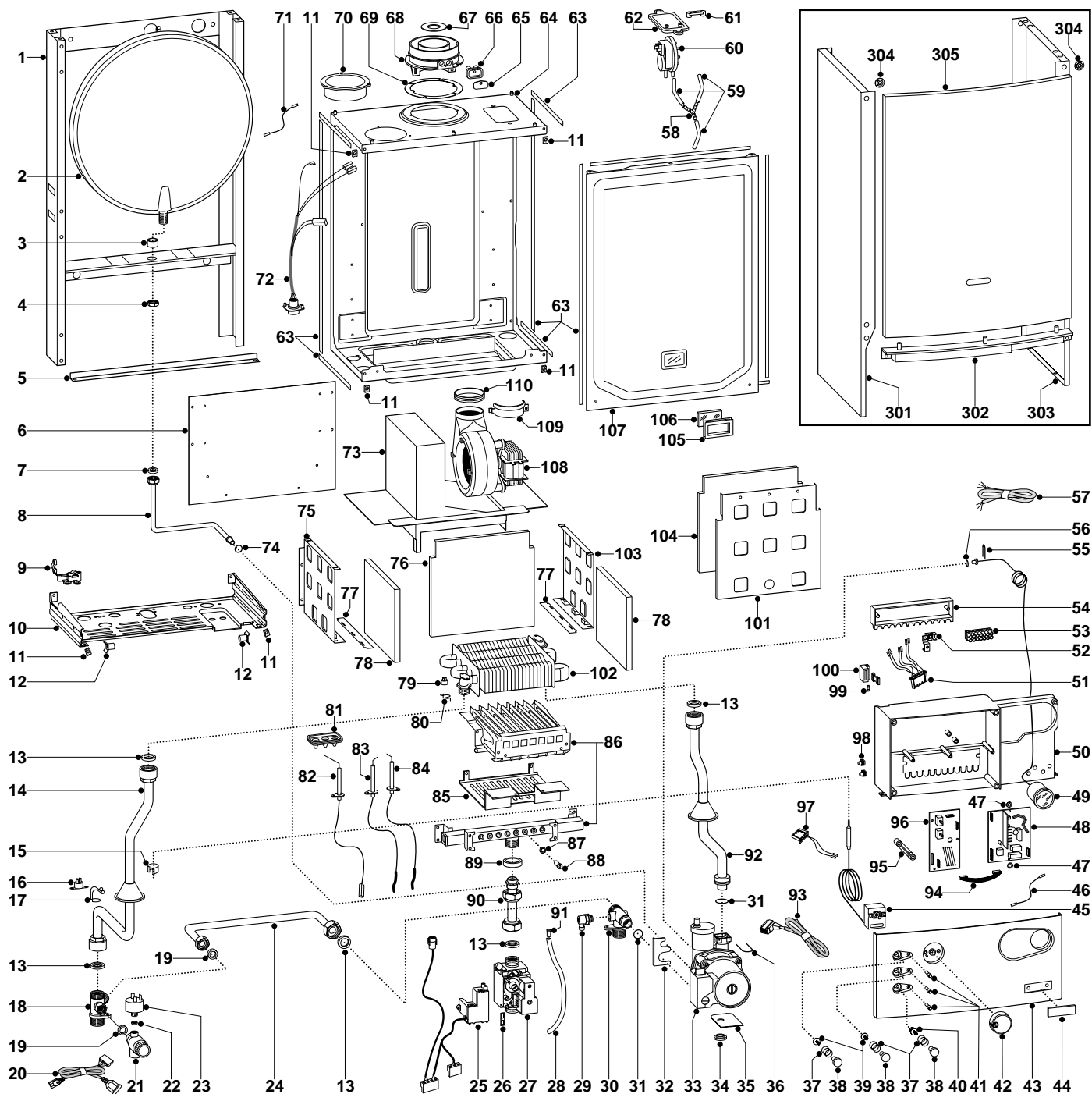
Models

MICROSYSTEM 10 RFFI

MICROSYSTEM 15 RFFI

Edition 1 of 15 October 2001





MODELS	CHARACTERISTICS	SERIAL NO: VALIDITY	REF.
MICROSYSTEM 10 RFFI	METHANE	232012100001	A
MICROSYSTEM 15 RFFI	METHANE	232012100001	B
MICROSYSTEM 15 RFFI	LPG	232012100001	C

ER2001210025101001

PART.	CODE	DESCRIPTION	REF.	NOTE
1	-----	Frame		11
2	998616	Expansion vessel		
3	998776	Bush		
4	998581	3/8" lock nut		
5	995393	Frame support		
6	999461	Panel (combustion panel - rear)		
7	573521	Gasket 3/8"		
8	999525	Pipe (expansion vessel)		
9	998580	Cable holder		
10	-----	Hydraulic group support		11
11	570717	Spring (fastening)		
12	995492	Pivot		
13	573520	Gasket 3/4"		
14	999528	Pipe (flow)		
15	571565	Fixing spring (pressure gauge)		
16	570760	Thermostat (anti-frost)		
17	999557	Fixing spring (anti-frost thermostat)		
18	998612	Flow group		
19	573528	Gasket 1/2"		
20	995407	Cable (low water pressure switch)		
21	998447	Safety valve (1/4" 3 Bar)		
22	569390	Gasket 1/4"		
23	995903	Low water pressure switch		
24	999923	By-pass pipe		
25	999987	Spark generator		
26	574279	Gasket		
27	999474	Gas valve		
28	573576	Compensation tube		
29	998809	Auto air vent		
30	999476	Return group		
31	998424	O-ring		
32	999162	Pump bracket		
33	999541	Pump (THULD 4.32 H9)		
34	999100	Lock washer		
35	995364	Spacer plate (pump)		
36	997153	U-clip		
37	999603	Spring (push button)		
38	999469	Push button		
39	999442	Spindle (push button)		
40	999444	Reset button insert		
41	997714	L.E.D. (power indicator)		
42	999456	Control knob		
43	999459	Control panel (front)		
44	997824	Name badge (plastic)		
45	999578	Thermostat (regulation)		
46	999547	Earth cable (P.C.B.)		
47	569711	Nylon bush (10mm)		
48	999499	Printed circuit board (CBM2 AT-FFI2X)		
49	999245	Pressure gauge		
50	-----	Control panel		11
51	995323	Cable (P.C.B.-terminal board)		
52	-----	Terminal board		11
53	995473	Terminal board (PA35/7)		
54	-----	Cover (rear)		11
55	571548	Clip (main flow switch)		
56	998517	Gasket		
57	995325	Cable (power supply)		
58	573327	"Y" piece (air pressure)		
59	571575	Silicone pipe (positive signal)		
60	995291	Air pressure switch		
61	573329	Pressure intake cover		
62	997203	Support plate (air pressure switch)		
63	998516	Gasket (adhesive 10x6)		
64	-----	Sealed chamber		11
65	998565	Cover (flue test point)		

ER2001210025101001

PART.	CODE	DESCRIPTION	REF.	NOTE
66	998636	Gasket (flue test point)		
67	995315	Restrictor (flue - exhaust manifold/header d.41)	BC	
67	995377	Restrictor (flue - exhaust manifold/header d.44)	A	
68	999561	Flue (exhaust manifold/header)		
69	998637	Gasket (flue collar)		
70	998595	Plug (air intake)	BC	
71	999925	Earth cable (sealed chamber)		
72	995894	Cable (sealed chamber)		
73	999466	Flue hood	BC	
73	999983	Flue hood	A	
74	998077	O-ring gasket		
75	998600	Panel (combustion chamber - L/H side)		
76	999441	Panel (insulation - rear)		
77	999981	Metal sheet (lower side)	A	
78	998639	Panel (insulation - side)		
79	999538	Overheat thermostat		
80	998583	Fixing spring (overheat thermostat)		
81	998147	Ignition electrode cable rubber		
82	998624	Detection electrode		
83	998622	Electrode (Ignition L.H.)		
84	998623	Electrode (Ignition R.H.)		
85	999982	Air baffle plate	A	
86	999479	Burner 8 ramp (N.G.)	B	
86	999481	Burner 6 ramp (N.G.)	A	
86	999685	Burner 8 ramp (L.P.G.)	C	
87	572138	Burner jet washer		
88	998433	Burner jet (N.G. 1.30)	AB	
88	998434	Burner jet (L.P.G. 0.77)	C	
89	569443	Silicone seal		
90	998729	Pipe (gas valve)		
91	573325	Rivet		
92	999529	Pipe (C.H. return)		
93	995906	Cable (pump)		
94	995324	Cable (P.C.B.)		
95	999458	Lever (P.C.B.)		
96	999501	Printed circuit board (CT1)		
97	995905	Cable (thermostat)		
98	569720	Blind grommet		
99	950030	Fast fuse 2AT		
100	572860	Terminal board (one-pole) + fuse-holder		
101	999151	Panel (combustion chamber - front)		
102	999486	Main exchanger	BC	
102	999965	Main exchanger	A	
103	998599	Panel (combustion chamber - R.H.side)		
104	999440	Panel (insulation - front)		
105	998076	Gasket (sight glass)		
106	998075	Sight glass		
107	999460	Panel (combustion chamber - front)		
108	995322	Fan	BC	
108	999487	Fan	A	
109	998566	Fixing clamp (fan)		
110	995349	Gasket (fan)		
301	998477	Case panel (L.H. side)		
302	998596	Insert case		
303	998476	Case panel (R.H. side)		
304	995305	Washer		
305	998442	Case panel (front)		
311	998716	Burner jet (full kit - N.G.)		12
312	998717	Burner jet (full kit - L.P.G.)		12

NOTE	DESCRIPTION
11	Not supplied as a spare part
12	Not illustrated